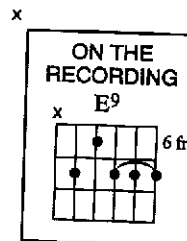


Soul Shuffle #2

58

Tempo: Moderate rock shuffle

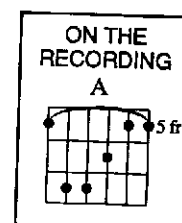
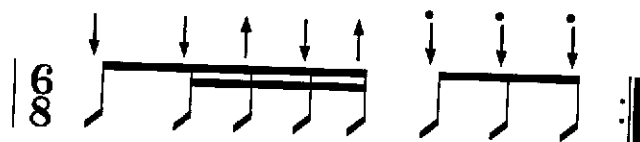


This has a slightly looser feel than *Soul Shuffle #1*, as in "How Sweet It Is (to Be Loved by You)" (Marvin Gaye, James Taylor) and "The Way You Do the Things You Do" (the Temptations).

Soul 6/8 Time #1

59

Tempo: Slow to moderate ballad

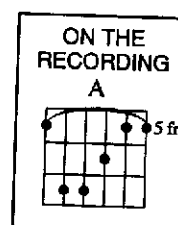
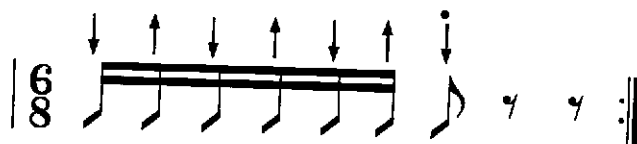


This has a very clipped, taut 6/8 feel, as in "Anyone Who Had A Heart" (Dionne Warwick), "I've Been Loving You Too Long (To Stop Now)" (Otis Redding), and "End Of the Road" (Boyz II Men).

Soul 6/8 Time #2

60

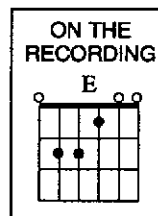
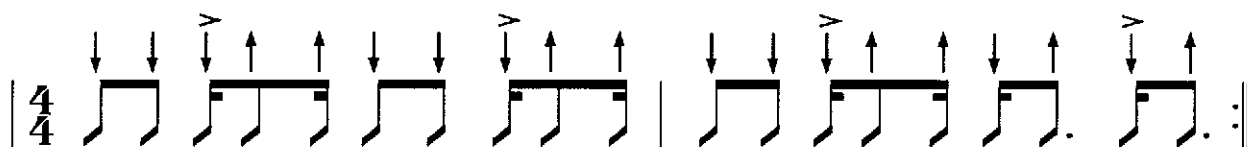
Tempo: Slow to moderate ballad



This is a variation of #1.

Rock/Funk #4 26

Tempo: Moderate to bright rock/funk

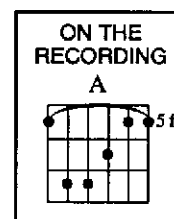
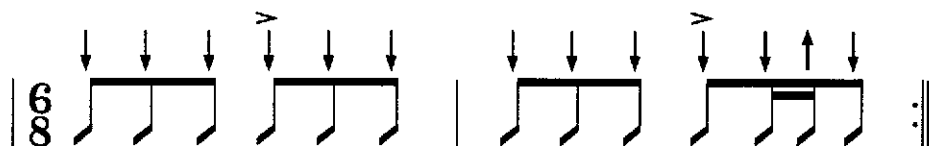


There are countless ways to vary *Rock/Funk* #2 and #3. This syncopated version fits tunes like "Sweet Home Alabama" (Lynyrd Skynyrd) and "Magic Man" (Heart).

EQUIPMENT NOTE: Often played on electric guitar with a lot of distortion.

6/8 Rock Strum #1 27

Tempo: Moderately slow rock ballad

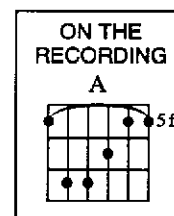
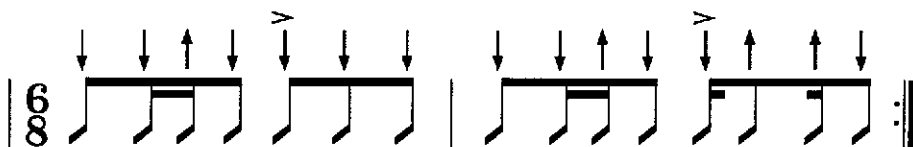


You can use the first bar and occasionally add the second bar for variety, or you can alternate the two bars as written. This strum fits countless fifties ballads like "Oh Donna" (Richie Valens), "To Know Him Is to Love Him" (Teddy Bears, Peter and Gordon, Bobby Vinton), and "You Send Me" (Sam Cooke).

EQUIPMENT NOTE: Often played on electric guitar with reverb.

6/8 Rock Strum #2 27

Tempo: Slow rock ballad



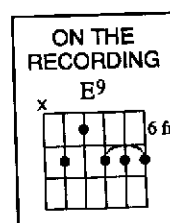
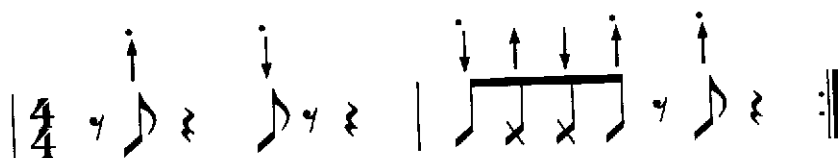
For slower 6/8 tunes like "Sleepwalk" (Santo and Johnny), "When a Man Loves a Woman" (Percy Sledge), "Time Is on My Side" (Wilson Pickett, the Rolling Stones), "This Boy" and "Oh Darling" (the Beatles), "Red House" (Jimi Hendrix), and "House of the Rising Sun" (the Animals). As in *6/8 Rock Strum #1*, you can use just the first bar and play the second bar occasionally, or you can alternate the two.

EQUIPMENT NOTE: Often played on electric guitar with reverb.

Urban Blues Comping #4

11

Tempo: Fast shuffle

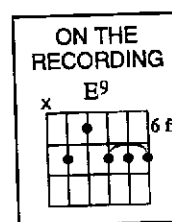
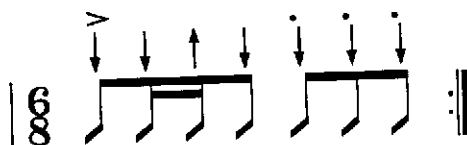


This is a faster variation of *Urban Blues Comping #3*, as in "Eyesight to the Blind" (mentioned before) and "Stang's Swang" (Stevie Ray Vaughan).

Slow Urban Blues Strum (6/8)

12

Tempo: Slow shuffle

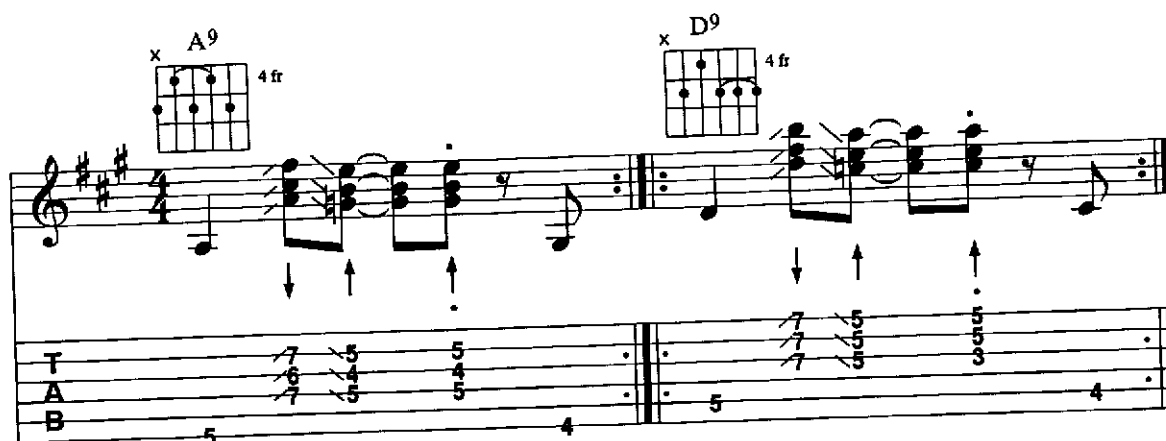


This works with the blues tunes mentioned in *Urban Blues Comping #2*. More titles are: "Reconsider Baby" (Lowell Fulson and others), "Blues With a Feeling" (Little Walter, Paul Butterfield).

Slow Urban Blues Strum #2

12

Tempo: Slow to moderate



This strum is used for the tunes mentioned in *Slow Urban Blues Comping #1* and *Slow Urban Blues Comping #2*. These two sliding licks are often heard in Chicago-style blues bands. They are based on the 9th chords so often played in that genre. They are played usually on electric guitar.